



LAWTECH
GROUP

Energy Efficiency



Delivering a Smarter, More Energy Efficient Future

Lawtech expertly deliver comprehensive retrofit and sustainability programmes designed to tackle fuel poverty, improve home energy performance, and reduce carbon emissions across a wide range of properties. This allows us to create warmer, more sustainable homes across the UK.

With an experienced and knowledgeable team, we collaborate with accredited parties, approved manufacturers, and key industry partners to provide high quality energy efficiency solutions. Every project is professionally managed to the highest standards, ensuring we deliver smarter, more energy efficient communities and contribute to a greener future.

Our approach not only focuses on immediate improvements in energy efficiency but also considers the long-term maintenance and adaptability of properties to future environmental standards. We engage proactively with residents and stakeholders to ensure that our solutions are tailored to the unique needs of each community, fostering greater awareness and participation in sustainability initiatives. This holistic approach ensures that our projects deliver maximum social, economic, and environmental benefits, setting a benchmark in delivering truly sustainable retrofit programmes across the UK.



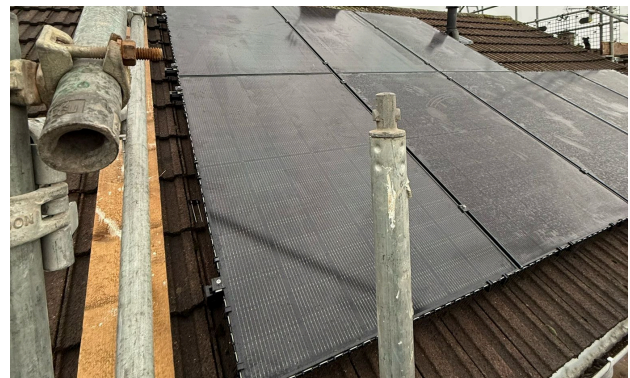
Key Workstreams

Lawtech lead the way in energy efficiency, offering full-scale retrofit and insulation services, which include:



Insulation Upgrades

Installing upgrades insulation (including EWI, CWI, IWI, and/or loft insulation) improves the building's ability to retain heat or cool air, reducing energy use.



Solar Panels (PV)

Solar panels (PV) generate clean electricity from sunlight, reducing reliance on fossil fuels, lowering energy bills, and decreasing a building's carbon footprint.



Heating Upgrades

Upgrades such as air/ground source heat pumps or modern efficient boilers reduce energy consumption, lower heating costs, and cut greenhouse gas emissions.



Window Replacements

Energy-efficient window replacements reduce heat loss/drafts, enhance indoor comfort, and contribute to more sustainable home environments.



Case Study

Dudley Fields, Walsall

Partnering with Surefire Management Services, Lawtech are delivering a range of decarbonisation and energy efficiency measures to a vast number of domestic dwellings in Walsall. All works are being delivered in accordance with PAS 2030/ 2035:2023.

Scope of Works:

- **Concrete Repairs:** To required properties, ahead of EWI replacement.
- **Asbestos Removal:** To required properties, especially in loft and chimney areas.
- **EWI and CWI:** Installation of Soltherm Ultimate FSC Silicone or Ultimate HD Silicone render to main wall areas.
- **Solar Panels:** Installation of TIGO Optimised TS4-A-O units.
- **Loft Insulation:** Installation of Knauf glass mineral wool.
- **Windows:** Installation of Ashmore Glass uPVC casement windows.
- **Doors:** Installation of Entrance & Prodoor44 composite doorsets.



Delivering decarbonisation and energy efficiency works allows us to tackle fuel poverty and provide real benefits to residents. Following works to each occupied property, a tenant handover is conducted to explain how the new measures work, who to contact with any questions/concerns, and any resulting savings. For example, reports have shown that 65% of the electricity the consumers will use will be from the Solar PV Panels and related batteries installed to their homes.



Case Study

Southwark Borough-Wide Refurbishment Programme

Lawtech surveyed and conducted the London Borough of Southwark's two-year planned maintenance estate regeneration programme spanning six fully occupied residential sites across 5,000 dwellings in over 40 multi-tenure low and high-rise blocks.

Scope of Works:

- Replacement roofing to provide 21,000m² of energy efficient flat roofing.
- Replacement windows to 685 dwellings.
- Communal decoration and repairs.
- Repairs and replacements to fascia, soffits and gutters.
- Electrical and heating works.
- Front entrance door replacements.
- Solar Panels (PV), 1,440 panels with a generating capacity of 350kW.
- 60,000m² of External Wall Insulation (EWI), CWI and loft insulation.
- Boundary walls and fencing, including brickwork repairs and repointing.
- Structural remedial repairs.



Through analysing LB Southwark's housing stock data and using expert knowledge of funding programmes Lawtech were able to streamline LB Southwark's specification to maximise potential funding, resulting in over £16,000,000 of funding. LB Southwark were advised that EWI on exterior balconies did not attract funding. The savings this generated funded the provision of PV to roofs, with an energy produce per year of 305,150 KWh. The insulation works undertaken typically allowed residents to save up to 40% off of their utility bills.