



Cabinet Office



Carbon Reduction Plan

Supplier name: Lawtech Group

Publication date: Issue 25th February 2026

Commitment to achieving Net Zero

Lawtech is committed to achieving Net Zero emissions by **2050 (Or earlier)**

Baseline Emissions Footprint

Baseline emissions are a record of the greenhouse gases that have been produced in the past and were produced prior to the introduction of any strategies to reduce emissions. Baseline emissions are the reference point against which emissions reduction can be measured.

Baseline Year: 2018/19

Additional Details relating to the Baseline Emissions calculations.

Lawtech are a principal contractor specialising in cladding remediation and other energy efficiency/fire safety works, undertaking all such works in-house.

We consider the environment and our carbon output on all projects we undertake in line with our 'green agenda'.

We encourage our clients to utilise sustainable construction methods and the use of recycled and recyclable materials in construction. We apply BREEAM wherever project conditions permit and take steps to encourage clients to manage their thermal envelope.

Baseline emissions are a record of the greenhouse gases that have been produced in the past and were produced prior to the introduction of any strategies to reduce emissions. Baseline emissions are the reference point against which emissions reduction can be measured.

Baseline Year

The baseline year is October 2023 - September 2024. Measurements include mandatory scope 1, 2, and 3 emissions. Estimates have been made with the collation of data.

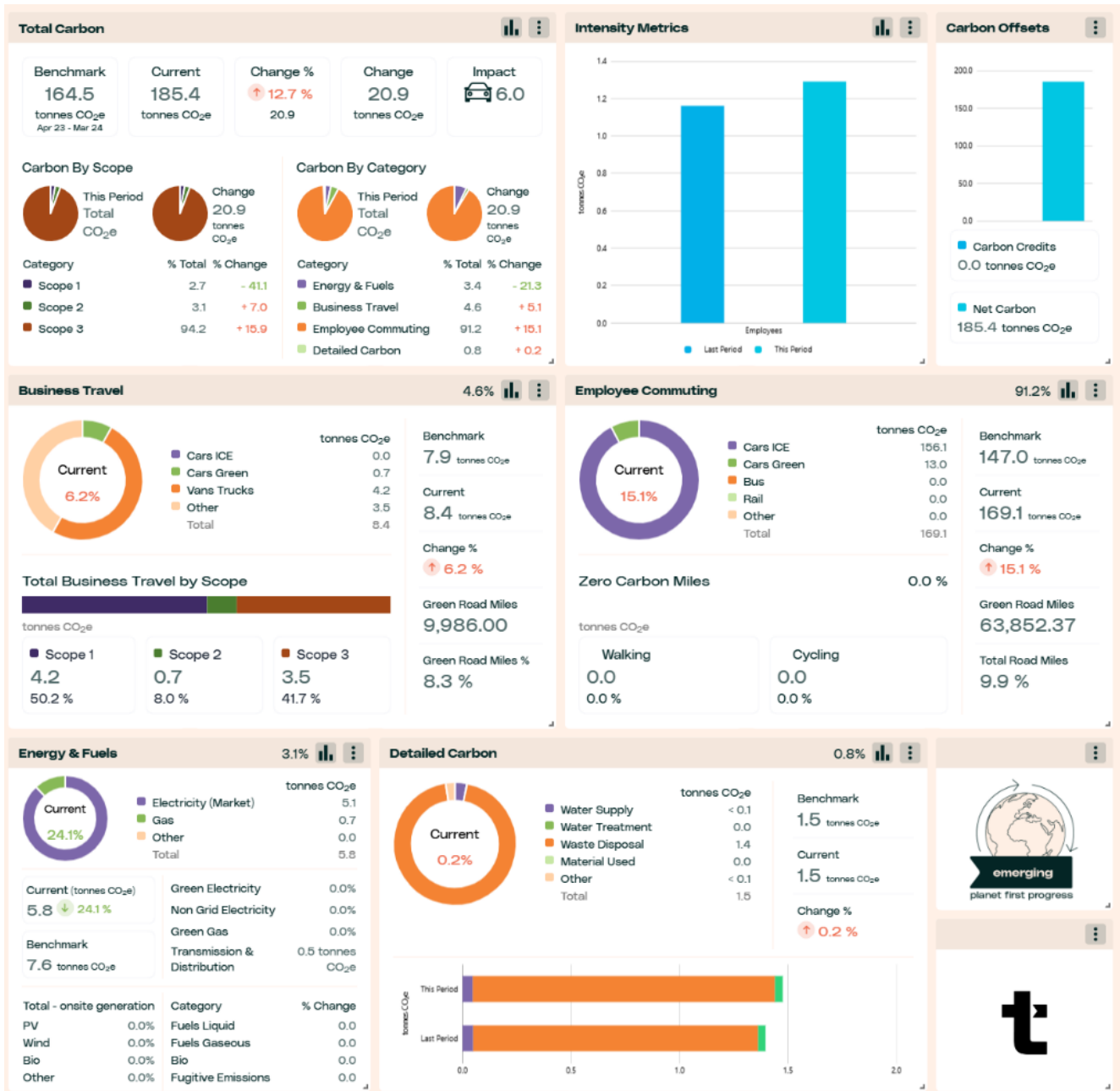
Baseline year emissions: 2023/24	
EMISSIONS	TOTAL (tCO₂e)
Scope 1	8.4
Scope 2	5.4
Scope 3 (Included Sources)	150.8 (Upstream Transportation & Distribution, Waste Generated in Operations, Business Travel & Employee Commuting)
Total Emissions	164.6

Current Emissions Reporting

Reporting Year: 2024/25	
EMISSIONS	TOTAL (tCO₂e)
Scope 1	4.9
Scope 2	5.8
Scope 3 (Included Sources)	174.7 (Upstream Transportation & Distribution, Waste Generated in Operations, Business Travel, Employee Commuting)
Total Emissions	185.4

Emissions reduction targets

In order to continue our progress to achieving Net Zero, we have adopted the following carbon reduction targets. Our total emissions have increased from 164.6 tCO₂e in 2023/24 to 185.4 tCO₂e in 2024/25. This largely as a result as a result of increased business activity and resulting employee numbers. Our total emissions has increased roughly in line with our increase in turnover. The CO₂e intensity ratio (kg CO₂e/employee) has reduced from 3,885 kg CO₂e/employee in 2019 to 1,300 kg CO₂e/employee, although this is a slight increase on our 2023/24 figure of c. 1,800 kg CO₂e/employee.



Carbon Reduction Projects

Completed Carbon Reduction Initiatives

The following environmental management measures and projects have been completed or implemented since the 2023 baseline.

- Lawtech Group have enhanced our ISO 14001 Environmental Management System on all of our projects.
- EV charging points at head office.
- We have replaced all lighting in our head office with LED lighting.
- We have implemented a new expenses form which more stringently checks internal business travel. This allows us to track the make, model, engine size and fuel of type of vehicles used as well as the number of miles covered.
- We have replaced all company cars with electric vehicles.
- We have purchased a compactor to ensure insulation waste volume is minimised and skip collections/deliveries to sites are minimised.
- We have encouraged customers and suppliers to reduce face-to-face meetings by adopting use of video calling and reducing travel.
- We use carbon accounting software to map our carbon footprint and record emissions on a monthly basis in order to track improvement.

Future carbon reduction projects include:

- Following the replacement of company cars, the potential replacement of company vans with electric.
- An assessment of whether to go 'green' on our gas & electricity provider/tariff.
- Speak to and encourage our supply chain to work to lower their emissions.
- Conduct a travel audit to identify viable and realistic business travel reduction opportunities.
- An in-depth review of all waste streams across all Lawtech sites.
- A review of water usage across all Lawtech offices.
- Maintaining a balance between working from home and attending office.
- Continuing to attend meetings remotely where appropriate, keeping business travel to a minimum.
- Further establishment of existing Lawtech regions. Regionalising the company structure will ensure Lawtech staff only work in their allocated regions unless absolutely necessary, reducing emissions related to commuting and other business travel amongst staff.
- Set carbon reporting requirements for subcontractors.
- Provide training and guidance on low-carbon construction methods.
- Train staff in carbon literacy and sustainable construction practices.
- Embed Net Zero responsibilities into job descriptions and site inductions.
- Appoint an individual internally to oversee our Net Zero journey.
- Investigation into salary sacrifice scheme, incentivising staff members to drive EVs.

Declaration and Sign Off

This Carbon Reduction Plan has been completed in accordance with PPN 06/21 and associated guidance and reporting standard for Carbon Reduction Plans.

Emissions have been reported and recorded in accordance with the published reporting standard for Carbon Reduction Plans and the GHG Reporting Protocol corporate standard¹ and uses the appropriate Government emission conversion factors for greenhouse gas company reporting².

Scope 1 and Scope 2 emissions have been reported in accordance with SECR requirements, and the required subset of Scope 3 emissions have been reported in accordance with the published reporting standard for Carbon Reduction Plans and the Corporate Value Chain (Scope 3) Standard³.

This Carbon Reduction Plan has been reviewed and signed off by the board of directors (or equivalent management body).

Signed on behalf of the Supplier:



.....

Date: ...25/02/2026.....

¹ <https://ghgprotocol.org/corporate-standard>

² <https://www.gov.uk/government/collections/government-conversion-factors-for-company-reporting>

³ <https://ghgprotocol.org/standards/scope-3-standard>